

Stampare con linux

- Si può stampare con linux?
- La mia stampante è adatta?
- Quali sono gli strumenti da utilizzare?
- Posso condividere la mia stampante?



Raccogliere informazioni:

<http://linuxprinting.org/>

Linux
Printing.org

LinuxPrinting.org

Ads by Goooooogle

HP DesignJet 430
50% off Cartridges &
Refills Great Prices -
Fast & Free Shipping
www.ThePrinterInkWareh

Home

[News](#)
[Database](#)
[Printer Listings](#)
[Driver Listings](#)
[Suggested Printers](#)
[Foomatic](#)
[CUPS QuickStart](#)
[PPD Docs](#)
[LPD Docs](#)
[PDQ Docs](#)
[PPR Docs](#)
[No Spooler Docs](#)
[Forums](#)
[Tutorial](#)
[CUPS Help!](#)
[KDE Print](#)
[PostScript/PPDs](#)
[Other Docs](#)
[FAQ's](#)
[Vendor Info](#)
[Articles](#)
[Projects](#)

Welcome to the LinuxPrinting.org website. We have resources to help with printing under free operating systems like GNU/Linux and the BSDs or under commercial UNIX-like systems such as Solaris and [OS X](#).

Looking for configuration or driver help? Try our [CUPS Quick Start](#) or look for your printer in the [database](#). For more detail, try [Till and Kurt's Tutorial](#). If all else fails, ask a human in the [forums](#).

Researching a printer purchase? Start with [suggested printers](#), or browse [the database](#).

Looking for software? We host [Foomatic](#) and some [other programs](#).

Want to help? [Here's how](#).

News!

Kyocera-Mita releases new MIT-licensed PPDs Fri 1 Apr 2005

From today on a new set of PPD files for Kyocera-Mita printers is available. This supports 6 new printer models. The package also contains translated PPD files in several languages and PDQ drivers.

Here are the [PPD files](#) and the [complete package](#).

Thanks to Juan Martinez from Kyocera-Mita for this Update.

Sharp releases their PPDs under GPL! Fri 4 Mar 2005

Finally, the PPDs released under GPL by Sharp on January, 24th (and a big bunch of even newer ones) made it to our [PPD Download Section](#). A minor technical problem had kept us from publishing these earlier, sorry for the inconvenience.



Stampanti supportate:

- HP (tutte, duplex e stampanti multifunzione incluse)
- Epson (quasi tutte, meglio se Stylus o Stylus Color)
- Canon (buona parte)
- Lexmark (poche e difficilmente le multifunzione)

Maggiori informazioni su

<http://linuxprinting.org/suggested.html>



CUPS

Common Unix Printing System

<http://www.cups.org>



CUPS fornisce un'interfaccia standard per la stampa per i sistemi operativi UNIX®-based.

Rappresenta lo standard per i sistemi Linux e Mac

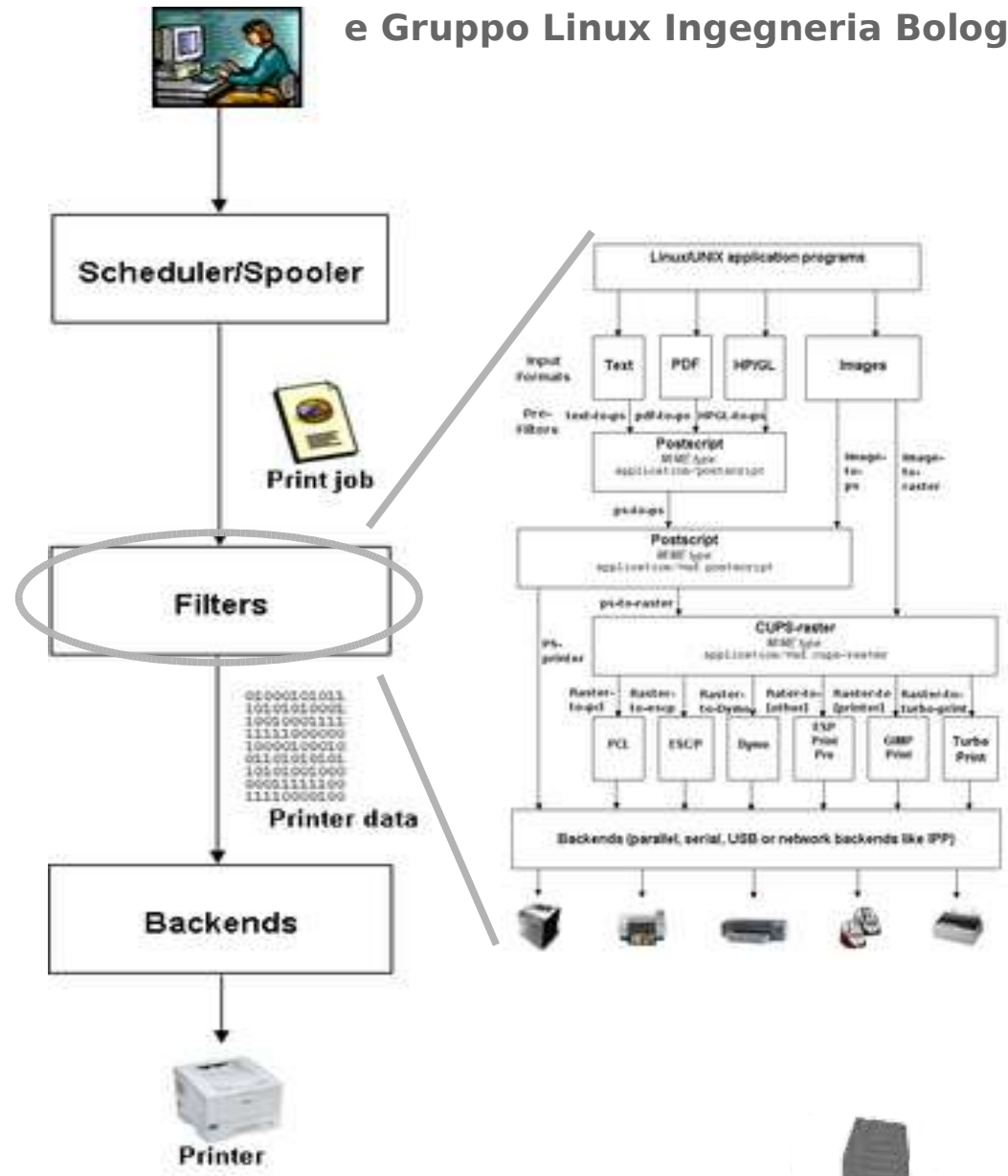
Riconosce automaticamente le stampanti di rete, ne fornisce una descrizione PostScript Printer Description ("PPD") e il supporto alle relative opzioni.

CUPS usa l' Internet Printing Protocol ("IPP") come base per gestire print jobs e code di stampa.

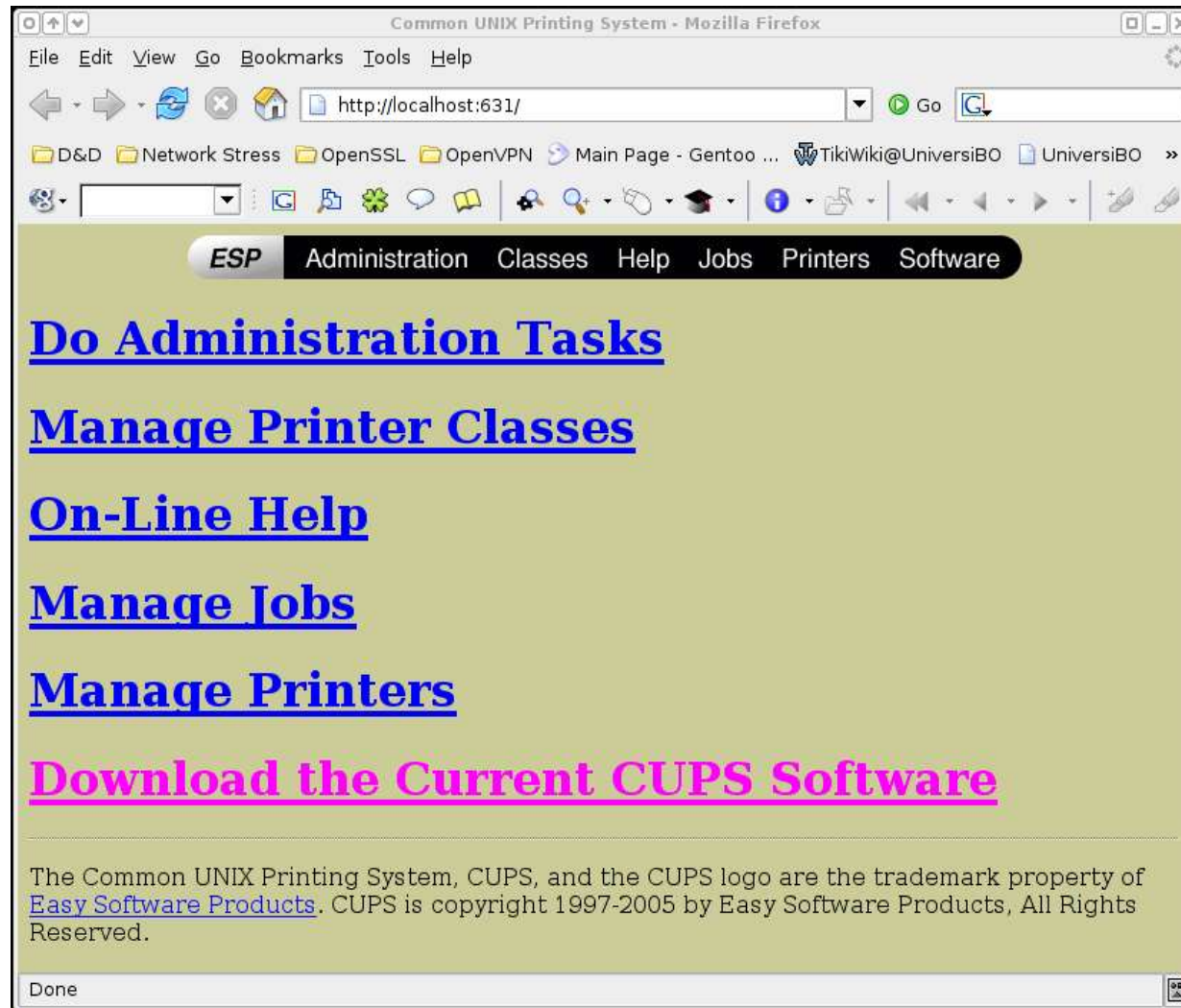
Combinato con Samba permette di condividere le stampanti linux con ambienti Windows.



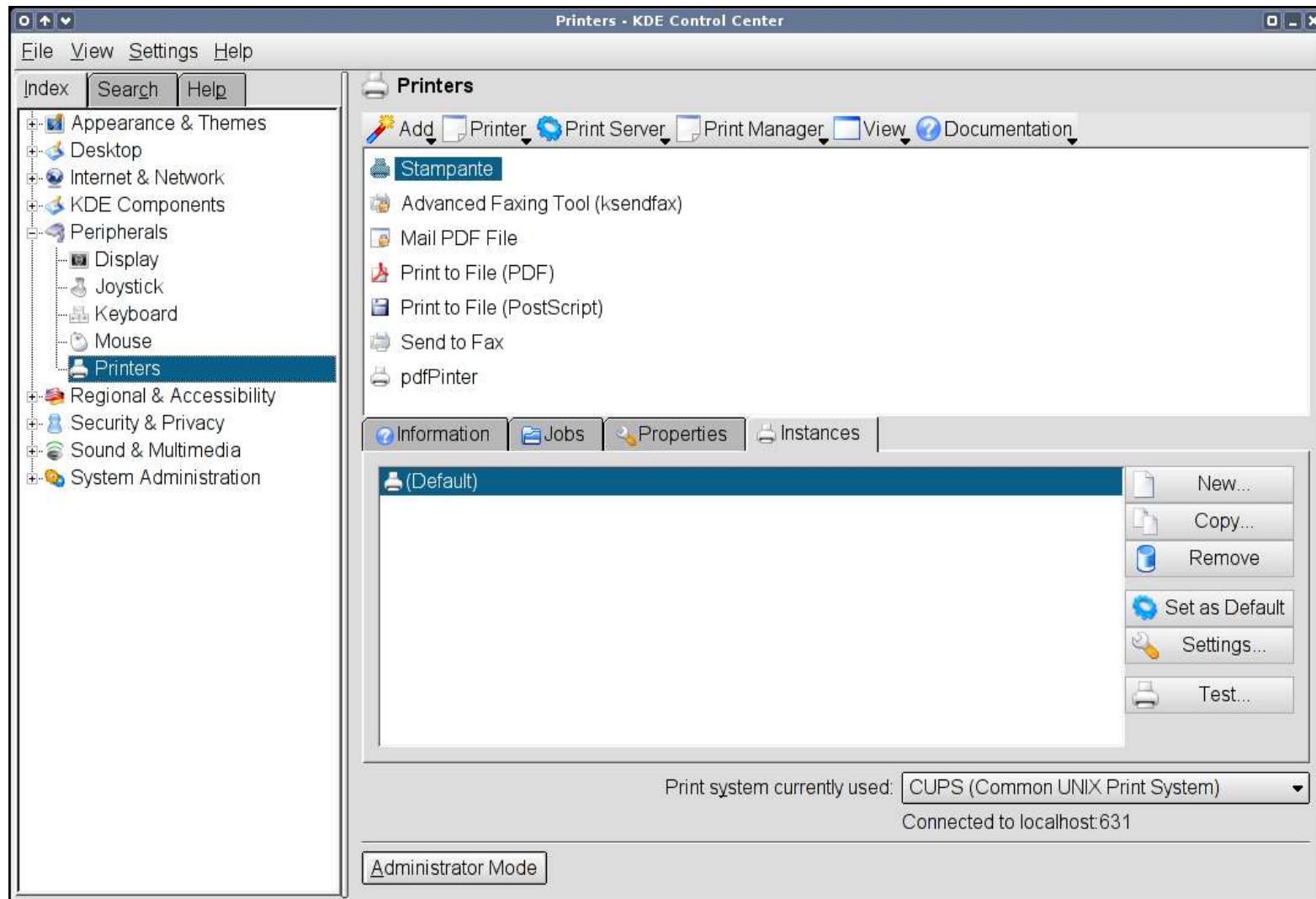
Come funziona?



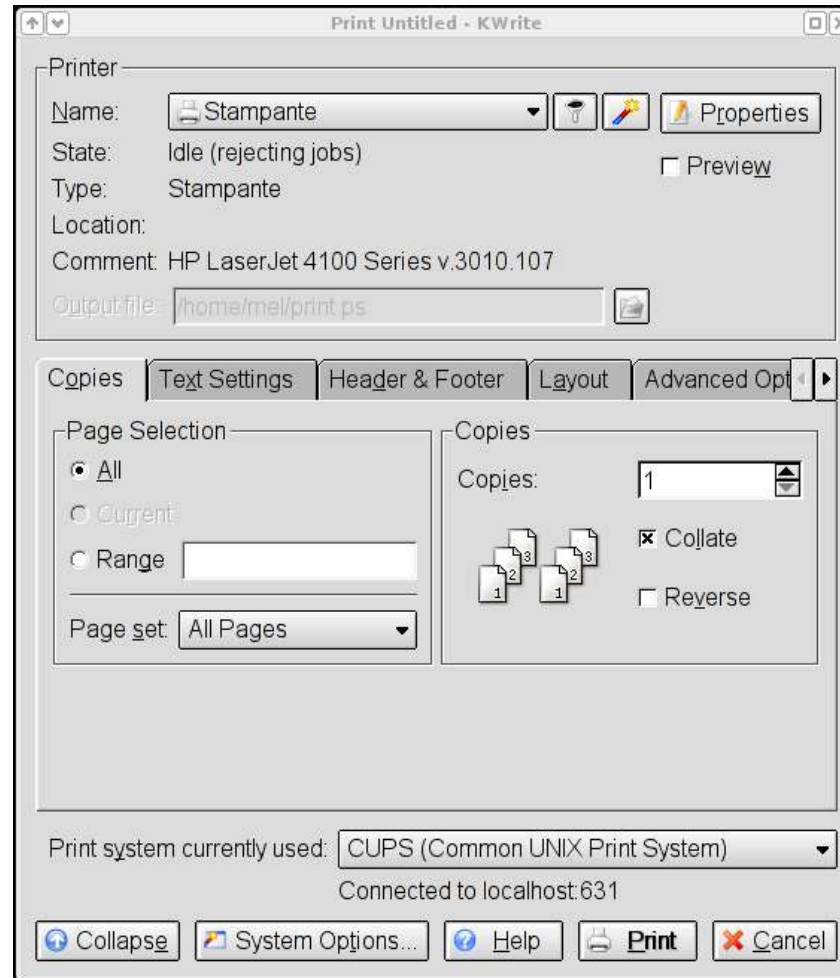
Interfaccia web-based:



Interfaccia di kde:



Impostazioni stampante:



Condivisione delle stampanti:

File: /etc/samba/smb.conf

```
[Global]
  printing = cups
  printcap name = cups

[printers]
  comment = All Printers
  path = /var/tmp
  printable = Yes
  create mask = 0600
  browseable = No
```



Esportare i driver per Windows

File: `/etc/samba/smb.conf`

```
[print$]  
  comment = Printer Drivers  
  path = /var/lib/samba/drivers  
  write list = root  
  create mask = 0664  
  directory mask = 0775
```

**Copiarvi i driver di cups (solitamente si trovano in `/usr/share/cups`).
Fare attenzione: i nomi dei driver devono essere maiuscoli.**

```
#cupsaddsmb -U root -a
```



E se non avessi CUPS?

Soluzione1:

Potrebbe essere installato ma non attivo

```
# /etc/init.d/cupsd start
```

attivarlo ad ogni avvio (per gentoo, ad esempio)

```
# rc-update add cupsd default
```

Soluzione2:

Scaricarlo dal sito ufficiale

<http://www.cups.org/software.php>



Riferimenti

<http://linuxprinting.org>

<http://www.cups.org/>

<http://en.wikipedia.org/wiki/CUPS>

<http://openskills.info/>

<http://linuxprinting.org/suggested.html>

<http://www.cups.org/documentation.html>

<http://linuxprinting.org/kpfeifle/LinuxKongress2002/Tutorial/I.LinuxKongress-2002-kdeprint/>

